

September
3rd-5th
2010

Third European ISELP Module

International Society of Equine Locomotor Pathology (ISELP)

The Hock

Lingehoeve Diergeneeskunde, The Netherlands

September 3rd -5th 2010



Lingehoeve Diergeneeskunde is proud to host the third European module of the International Society of Equine Locomotor Pathology (ISELP). This event will take place from September 3rd – 5th 2010, at our Equine Hospital in Lienden, The Netherlands.

The ISELP strives to provide practitioners with contemporary knowledge and techniques in the continually evolving field of equine locomotor analysis, in order to aid the equine clinician to better understand and manage lameness conditions in the equine athlete.

The subject of the third European ISELP module will be The Hock. Dr. Jean-Marie Denoix will lecture, in depth, on the regional anatomy, biomechanics, clinical examination, diagnostic imaging and management of performance problems originating in this interesting area.

The lecture, demo and wet lab (in English) will take place at Lingehoeve Diergeneeskunde Equine Hospital in Lienden, in the heart of The Netherlands. Schiphol airport (Amsterdam) has worldwide direct flights. Hotel accommodations are available nearby (5km) and a shuttle will be arranged for local transport.



Lingehoeve Diergeneeskunde – www.lingehoeve.eu

September
3rd-5th
2010

Third European ISELP Module

International Society of Equine Locomotor Pathology (ISELP)



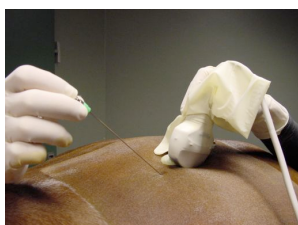
I.S.E.L.P.

ISELP is outlined on their website at www.iselp.org. The ISELP provides a series of training sessions focused on anatomical regions of the horse. Each session provides instruction on the integration of advanced diagnostic techniques and imaging as they pertain to the evaluation of pathology of the locomotory system causing lameness. There are eight modules, each providing a thorough overview of discrete anatomic regions using lecture and illustrative case material. Four modules are offered per year in order to complete all of the modules in a two-year period. Membership and participation details can be found on the website (www.iselp.org).

Lingehoeve Diergeneeskunde is an equine referral hospital in the heart of The Netherlands. The clinic was originally founded in 2000 as a mixed practice. Currently, the equine section of the hospital has seven veterinarians including four board certified specialists and two ISELP certified veterinarians. The equine section has a robust international network for consultation of specialists worldwide. The hospital serves as a regional referral center for many practices and is well known for the implementation of the latest treatments and diagnostic techniques in equine medicine. The hospital has diagnostic imaging capabilities that include digital radiography, high resolution ultrasound, nuclear scintigraphy and contrast enhanced computed tomography. These techniques are used on a daily basis for diagnosing locomotor pathology.



Dr. JM Denoix of CIRALE (Center of Imaging and Research on Equine Locomotor Affections) in Normandy, France is considered the world's foremost equine musculoskeletal system anatomist as well as a leading equine diagnostic ultrasonographer. Dr. Denoix is a founder and current president of ISELP. He has been an invited speaker at many international meetings in more than 30 countries around the world on topics related to clinical examination and imaging of equine locomotor problems.



The ultrasonographic techniques shown in the lecture presentations will be demonstrated and taught in a live animal, wet-lab. On Sunday the wetlab is scheduled to end at 13.00h, so travel plans should be made accordingly.

The course (wetlab included) will be strictly limited to 60 participants.

The ISELP website (www.iselp.org) outlines not only the overall guidelines of ISELP but also details the requirements for candidate competency examination. If there are any additional questions, do not hesitate to contact the organization.



Lingehoeve Diergeneeskunde – www.lingehoeve.eu

September
3rd-5th
2010

Third European ISELP Module

International Society of Equine Locomotor Pathology (ISELP)

The Hock

Lectures, demonstrations and wetlabs will all take place at Lingehoeve Diergeneeskunde, Veldstraat 3a, 4033 AK, Lienden, The Netherlands.

Thursday

- Pre-registration and Welcome Reception 6.00-8.30pm, at van der Valk Hotel Tiel.

Friday

- 7.00h-8.00h Breakfast
- 7.00h Registration
- Lectures and case studies: Dr. J-M Denoix all day
- Lunch

Saturday

- 7.00h-8.00h Breakfast
- Morning: ultrasound demonstration by Dr. J-M Denoix
- Lunch
- Afternoon: continued discussion and case presentation
- Evening: surprise evening (with dinner)!

Sunday

- 7.30h-8.30h Breakfast
- Morning: Hands-on wetlab
- 13.00h end of program

If there are any questions regarding registration, program, or hotel reservation do not hesitate to contact our ISELP coordinator Elske Koeman at iselp@delingehoeve.nl



Third European ISELP Module

Lingehoeve Diergeneeskunde, The Netherlands

September 3rd - 5th 2010

Name:

Practice Name:

Address:

Zip City/State Country

Phone: Fax:

Email:

ISELP Member Non-Member

Current ISELP Members receive registration priority up to 30 days prior to the module. Less than days pre- module registration is on a 1st come basis! Become a member or renew and Register Early! Registration is definitive once this registration form has been faxed and confirmed.

950,00 Euro – Lecture, Demonstration, Wetlab and DVD included

Method of Payment

By bank transfer to:

Account Name: Lingehoeve Diergeneeskunde, Account number 3303 75 989.

IBAN Code: NL46 RABO 0330 3759 89. SWIFT Code: RABONL2U.

Rabobank West- Betuwe, Postbus 220, 4000 AE Tiel. Mention your name.

Please send copy of the bank transfer by fax or email to:

**Lingehoeve Diergeneeskunde,
Veldstraat 3a , 4033 AK Lienden, The Netherlands
Phone: +31(0)488-482900 Fax. +31(0)488-481355
Email: iselp@delingehoeve.nl**

Hotel reservation

Reservation must be made by 1 July 2010: www.hoteltiel.nl

To receive the group rate mention by: questions/additions: ISELP Lingehoeve.

You can pay by cash or credit card by arrival.

Van der Valk/Hotel Tiel, Laan van Westroyen 10, 4003 AZ Tiel, The Netherlands

Phone +31(0)344622020, Fax. +31(0)344612128, email tiel@valk.com.

